



**12 Months with UNISEC-Global**

**“Bridging Health and  
Space”**

**Samuel Ndayizeye**

**Medical Engineering  
Tokai University**



# Reflecting on our journey

---





# Reflecting on our journey

---

Start

UNISEC-Global

Others

Bridging health and space







## Process

- Learn
- Grow
- Develop then advance

Get wiser



## Destination

The end goal of a journey





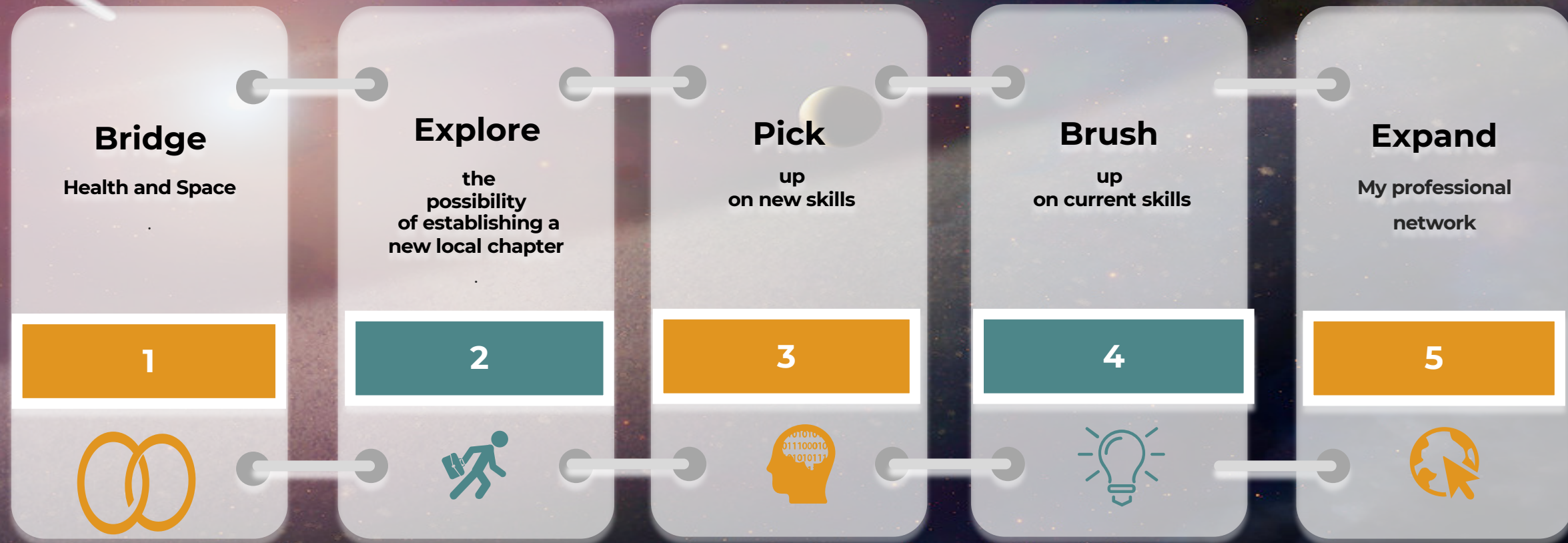
# Background

Timeline?





# Expectation





# Working on variety of events

Behind scenes!

**MIC**

Post-Mission Idea  
contest activities

**Virtual UNISEC  
Global meeting**

Organizing team



**CLTP**

Post-Cansat leader  
training program  
activities

**Constant emails with  
UNISEC members**



# Space Tech for healthcare innovations





# Satellites for healthcare innovations

Treating emergencies remotely

01

04

Monitoring life signals remotely

Taking part in the project were five patients each with a Medtronic cardioverter defibrillator (pacemaker)

The medical database

03

02

Tracking infectious diseases



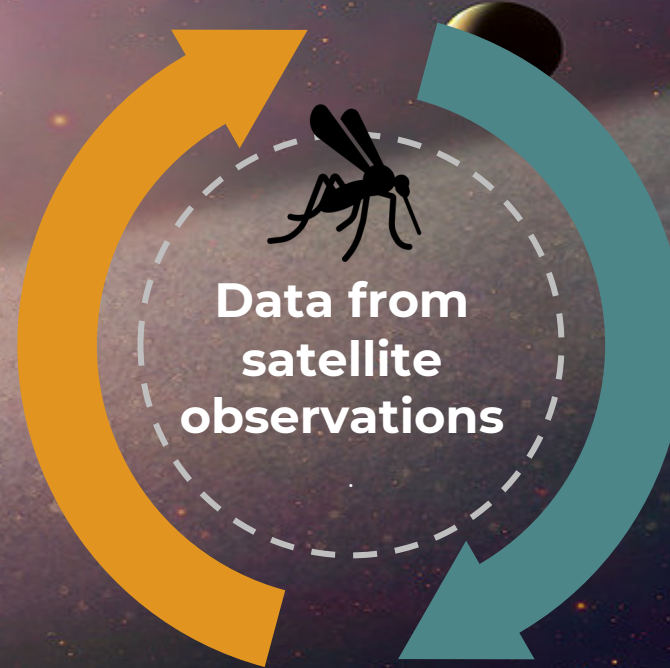


# Tracking malaria

RSA

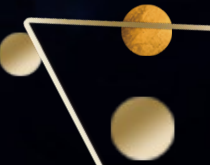
## Mosquito habitat

New sources of very-high-resolution satellite data create opportunities for precise, localized mapping of mosquito habitat and human settlements.



## Human activities

- High-resolution land use and land cover maps from satellite observations provide information about human activities that affect mosquito habitats and exposure to mosquito bites





# Key Takeaways



**01**

Professional  
feedback

**02**

Professional  
Network

**03**

Work  
experiences

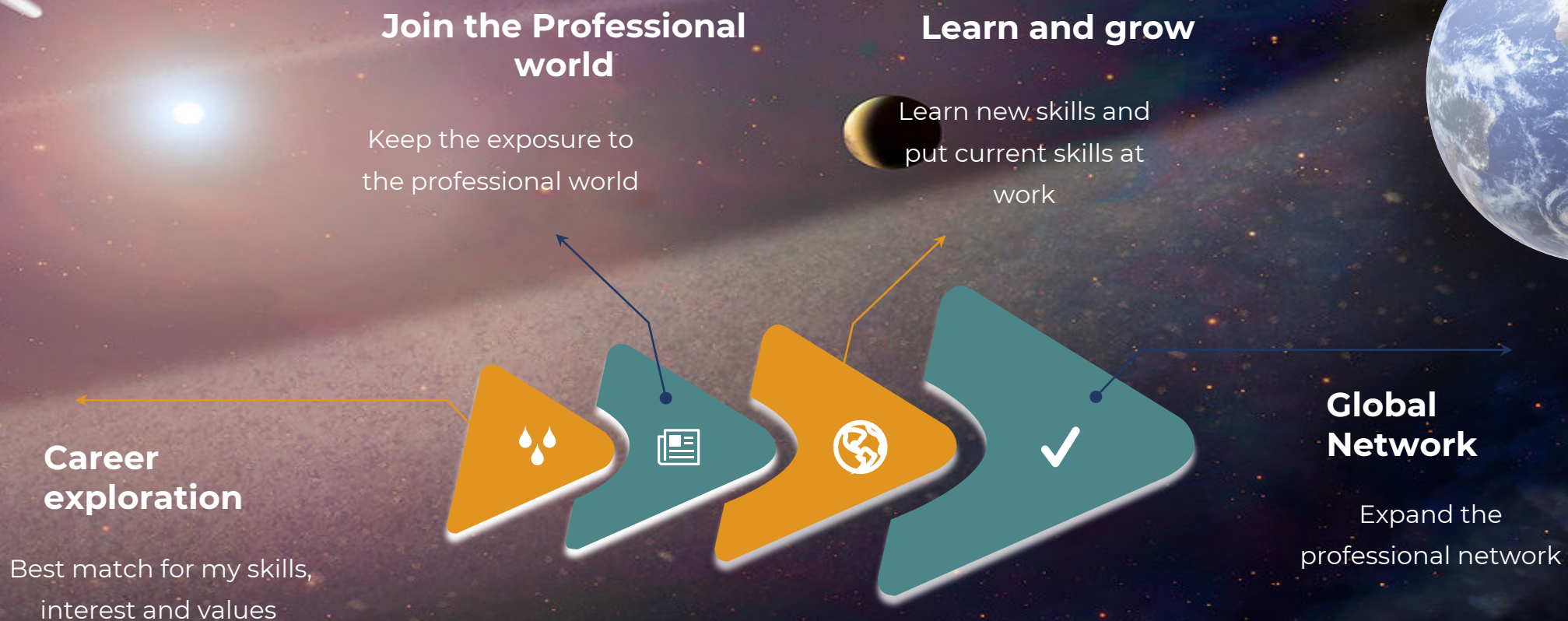
**04**

Extensive  
Knowledge on  
space Tech



# What know?

Journey continues in 2023





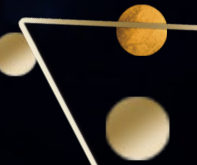


# Closing



“If you want to go fast go alone, If you  
want to go further go together”

~AFRICAN PROVERB

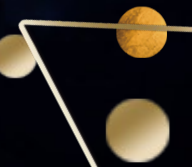




# Closing



“If you want to go fast go alone, If you want to go further/Learn grow and develop go together”





The background is a deep space scene with a purple and blue nebula. A large teal triangle with a marbled texture is centered. Various celestial bodies are scattered around: a bright star with a lens flare on the left, a comet streak in the upper left, several small yellow spheres, and two larger circular images showing cratered planetary surfaces. The text 'END' is centered within the triangle, underlined.

END

**THANK  
YOU!**