



YOUR ADCS PARTNER

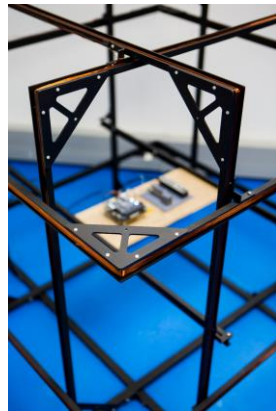
Corporate Presentation

12 December 2020

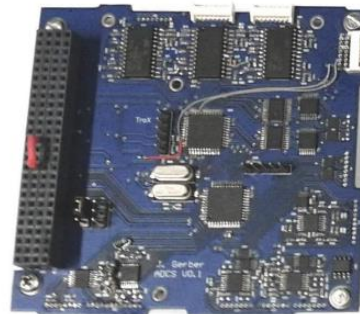


CubeSpace in summary

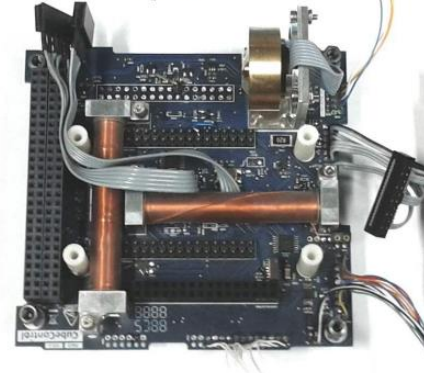
- Spin-off from University of Stellenbosch, Electronic Systems Lab, in South Africa
- *Laser-focused* on ADCS
- Active since 2013 as part of the university, formally established in 2017
- Hardware in orbit since 2014 on the QB50 Precursor Satellites
- 17 Full-time staff, which 9 has post-grad degrees in Control Systems
- 250 m² facility with 80-m² is cleanroom, all dedicated to ADCS assembly, integration and testing



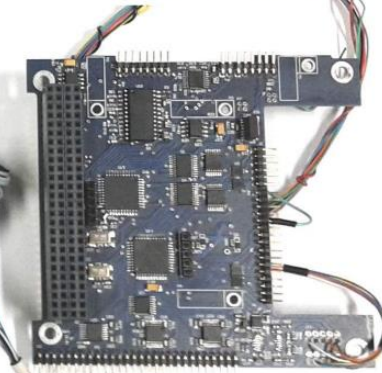
ZACUBE - 2

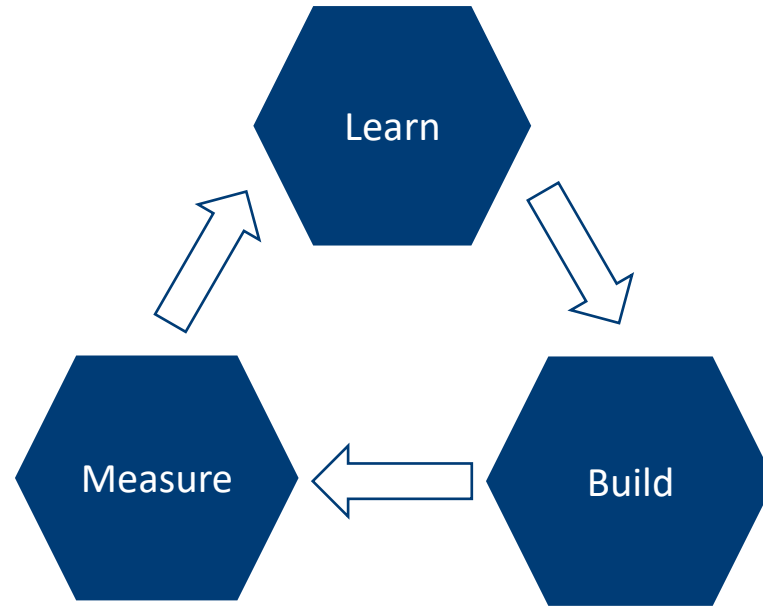


QB50



DeOrbitSail





Credit: Eric Ries – Lean Start-up

Our mission is to continuously improve our system so that all satellite builders globally can benefit from an ADCS product with unmatched maturity, at an affordable price.



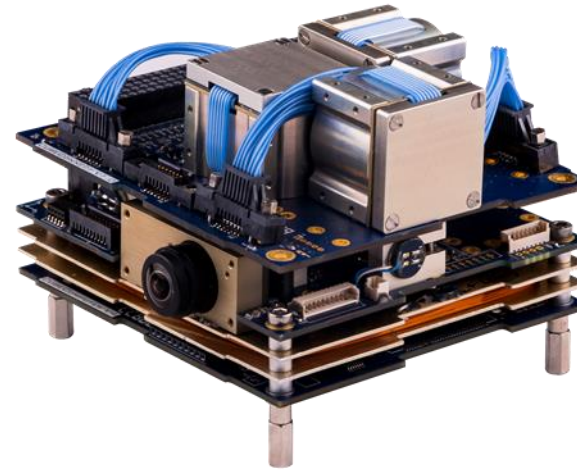
YOUR ADCS PARTNER

Key clients and partners



Flight-proven, flexible ADCS

Our products are built for satellites ranging from 1 kg to 30 kg and have been included in a total of more than 100 missions as integrated units or standalone components



CubeADCS
Integrated system
Modular
Algorithms included
70+ units delivered
In orbit since 2014



CubeSense

Fine sun or earth Sensor
70+ units delivered
In orbit since 2014



CubeIR

Infrared horizon sensor
New product
Launch expected 2021



CubeStar

Compact star tracker
50+ units delivered
In orbit since 2018

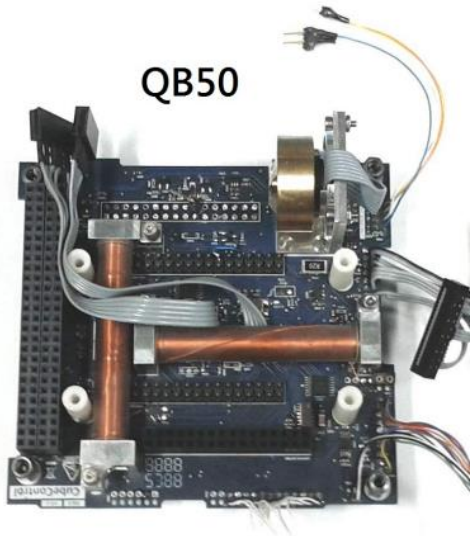


CubeTorquer
Magnetorquers
300+ units delivered
In orbit since 2014

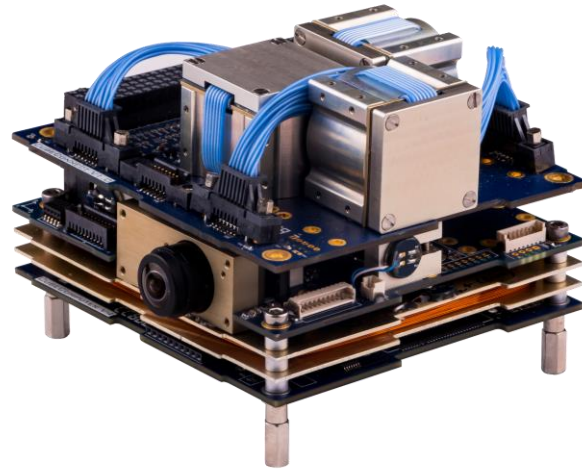


CubeWheel
Reaction wheels
300+ units delivered
In orbit since 2014

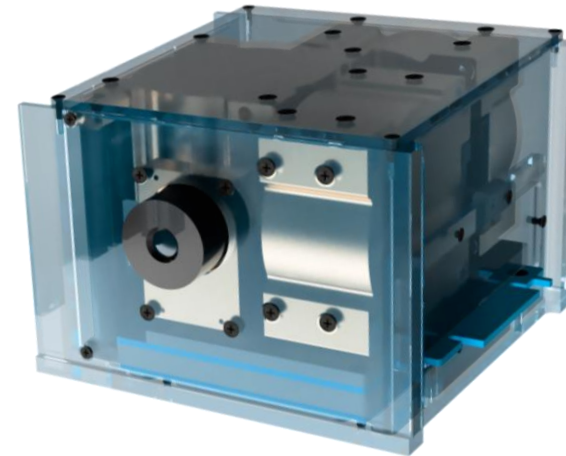
Products evolution: from QB50 to CubeADCS Gen 2



2013



2017



2021

Customizable
mechanical interface

Customizable electrical
bus interface

Up to 4 reaction wheels

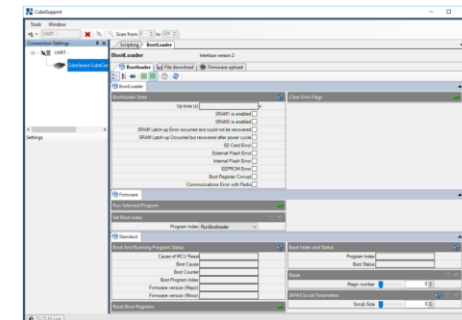
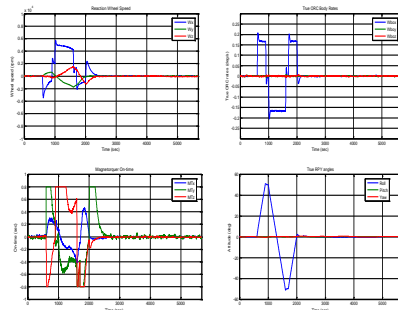
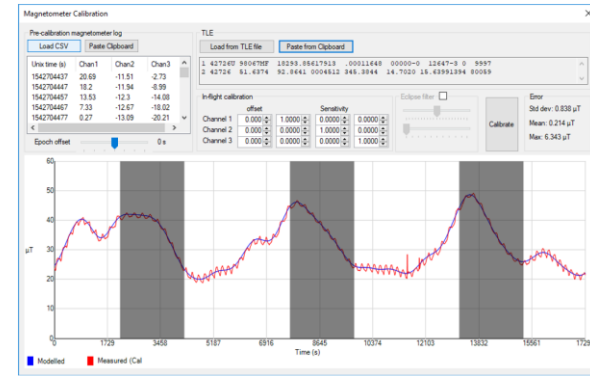
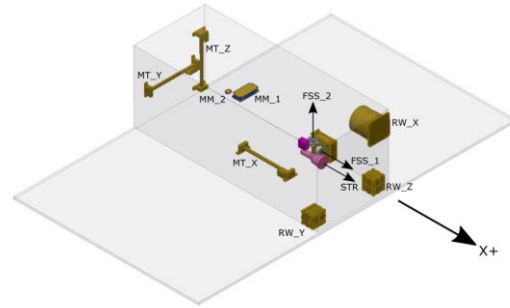
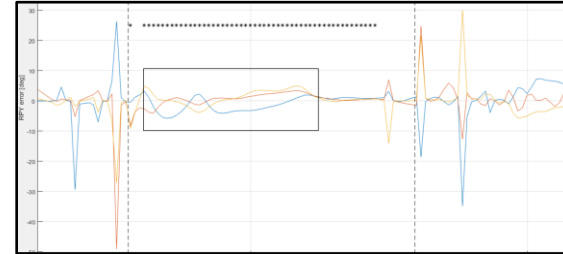
Up to 7 sensors

In-orbit
Reprogrammable

Best industry standard
(MISRA-C, ECSS, ...)

Full ADCS Service

- Requirements review
- Selection/Placement of sensors/actuators
- Performance Simulation
- Integration Support
- Commissioning/Operations Support





YOUR ADCS PARTNER

Thank you

Contacts

Mike-Alec Kearney – mike@cubespace.co.za – CEO

Benoit Chamot – benoit@cubespace.co.za – Head of Sales & Marketing

www.cubespace.co.za | moon.cubespace.co.za (Virtual lunar base)